

# Nafferton Newsletter


Issue 83. December 2015-January 2016

## Santa on the Mere. 6pm, Friday 11<sup>th</sup> December


Welcome Santa as he rows across the Mere to start the Scout's Annual Christmas Fayre in true Nafferton tradition! Get in the festive spirit as Christmas lights are switched on to festive accompaniment from Drifffield Silver Band, then follow Santa to his Grotto at Nafferton Primary School where an array of fabulous craft stalls, fun games, seasonal tunes and refreshments await! All welcome!



## Parish Council Notices

 **Parking Issues:** The Parish Council would like to politely ask people to refrain from parking on the grass verges around the village. The PC have received a couple of complaints over the last couple of months, and although legally we can't ask the police to enforce it unless it's causing an obstruction, it does have an effect on the look of the village. Additionally we are paying our village maintenance team to cut the verges which is a waste of money and effort if people are parking on them and rutting them up.

Complaints have also been raised regarding illegal parking around Nafferton Primary School at drop off and collection times. Cars have been stopping in the clearly marked 'Keep Clear' zone – (denoted by the yellow 'zig zags') creating road safety concerns for children. The 'Keep Clear' zone is designed to prevent traffic from stopping near sensitive crossings and entrances where the potential for accidents is high. Vehicles parking by the school entrance reduce visibility of oncoming traffic and create obstacles for emergency vehicles too. The Parish Council are working with EYRC regarding the possibility of a pelican crossing which would help, but we also need to educate the drivers regarding parking appropriately.

 **Phone Mast:** The Parish Council are investigating the possibility of erecting a phone mast at the Recreation Club. As well as improving the mobile signal for the village, the rental will be a regular source of income for the Rec Club. If anyone has any comments to make regarding this, can we please ask them to attend the next Parish Council meeting on Wed 9<sup>th</sup> December, 7.30 pm at the Rec Club.

**Rec Club Planning:** The Parish Council have formally applied for planning permission for the new build at the Recreation Club. As well as

Plans to rent out part of the building to Nafferton Under Fives Pre-School, there will be a separate large function room and kitchen facilities to hire for parties and events. Drawings of the plans are available to view via the village website [Nafferton.net](http://Nafferton.net).



**Village Emergency Plan:** We are revising the village Emergency Plan which has not been updated for a number of years. If there are people who live in the village and are prepared to volunteer during an emergency, or have skills, such as medical training, that could be useful during such an event, and would be open to their contact details being included in the plan, please get in touch via the Nafferton website.



**Remembrance Day:** Thanks to those involved in the Remembrance Day service. This year it was organised by Cllr Paul Nicholson who read the citation. Thanks go to bugler Andrea Grace, and to the Scouts, Cubs etc that were involved - and to everyone who turned out on a particularly wet morning!



**Seasonal Advice:** A few important reminders... **Can you be seen?!** Please remember to wear 'HIGH VIS' clothes to remain safe and make sure that you, your children and pets - can be seen when out walking, cycling, jogging...

**Gritting:** ERYC grit only main roads through the village. The PARISH COUNCIL will grit the junction of Westgate and the school area and some pavements including outside the doctor's surgery, bus stop, the Post Office, Londis and the Fish & Chip shop...Grit bins are placed throughout village.

**LOOK AFTER THE DRAINS!** Please keep them free from LEAVES. Thank you!



And finally, **HAPPY CHRISTMAS TO ALL!**



# Rainbows Leader

Nafferton Rainbows is looking for a new leader to take over in the New Year. Without new volunteers coming forward, sadly the Nafferton Rainbows unit will be closing this Christmas. Current leader, Christine, or 'Squirrel' as she's fondly known by the girls, hopes someone will come forward to take on the role of leader, or assistant leader, quickly to prevent that happening.

Rainbows is part of the Girl guiding association catering for members aged five to seven. The group is all about developing self-confidence, building friendships, learning new things and having fun. Girls get their hands dirty with arts and crafts, trying out cooking, playing games and sharing experiences with each other.

## NAFFERTON IN BLOOM

As we look around the village we see the summer flowers have disappeared and replaced with Autumn and Winter flowers. "Bloomers" have been busy making sure everything is kept tidy and looking as colourful as possible.



A lot of work has been undertaken by NIB members during 2015, and the benefits can be seen from New Road, Driffield Road, the Bus Shelter, the Mere, Jubilee Gardens, the Primary School, Westgate, Howe Lane, War Memorial, Markman Lane, Lowthorpe Lane, Rail Station and Bomb site....together with other sites too numerous to mention.

We take this opportunity to say a big thank you all those who have supported NIB either by donation or loan of equipment. Without you we would struggle. We've recently received a donation of approximately 2000 daffodil bulbs, so NIB members have been busying themselves with planting and look forward to the fruits of their efforts in the Spring.

**As we look forward to the New Year, NIB has decided that we will enter Yorkshire in Bloom competition in 2016!** This is a challenge of which we are more than capable, and look forward to showing Nafferton in all its glory.

We continually look for new members to join our merry band of "Bloomers"....it costs nothing, just as much or as little of your time that you can give. Anyone interested in joining NIB, please contact Jan on 250175 or Bill on 538629.

So why volunteer?! Volunteering with the Girl guiding group allows you to give something back to your local community and feel rewarded in lots of different ways. You may be interested in volunteering as a means of developing skills to support your career or may just want to help girls fulfil their potential, offering them support and guidance at a crucial stage in their lives. It's a great opportunity to meet new people where you live, while making a worthwhile contribution to the community.

If you're someone with a sense of fun who would enjoy taking on this exciting challenge, please contact Christine. Telephone 07484 506057 or email [lowthorpehall@yahoo.co.uk](mailto:lowthorpehall@yahoo.co.uk) thank you!


## Nafferton Newsletter

Sadly as yet we haven't received any applicants showing interest in becoming one of our Newsletter editor/compiler. So, needless to say, we hope someone will come forward and make contact with us as soon as possible.

As we said in the last Newsletter, if you have reasonable computer skills, are able to manipulate text, cut, copy, paste etc... but would like to know more before committing yourself, please do not hesitate to have a word with me, John Gledhill, on 254354 or better still have a chat with either of our existing editors, Nicola on 255471 or Sheenagh on 254717, preferably please phone evenings or weekends.

The work consists of just a few hours of your time over a 10 day period twice yearly and you receive a small donation per annum to cover overhead costs of paper, phone, printing cartridges etc. We hope we can soon welcome an interested party to our little team.

## Badminton



Our village badminton club is now back fully operational on Monday nights 7.45pm but we are still a bit short on numbers. Any interested players should contact Joan Gledhill on 254354 for more information. Some previous experience would be helpful!



**Nafferton WI** Members have attended events at Beverley and Rudston during the last two months.

The Federation Autumn meeting was held at Longcroft School, in Beverley, where one of the speakers was Janice Langley, The National Chair.

The Group Rally was hosted by Rudston and was most enjoyable. This concluded our Centenary year in a grand style – all the five displays were fantastic each one in black and gold depicting 100 years of the Women’s Institute, Kilham were the overall winners, taking the trophy back home.

At our monthly meetings we have recently had a talk by a local actor John Slater who entertained us with song and dance and tales of his 41 years on the stage. Last week we had a mouth-watering cookery demonstration by Sheila Meadley – enjoyed by all. We are now waiting for our Christmas party and visit from Santa with his elves!

Why not commence 2016 by joining us? You will be made most WELCOME.

### **Driffield Rotary Club**

As promised in the October Newsletter, two Nafferton charities have benefitted from donations given by Driffield Rotary Club in connection with support provided by Nafferton residents who volunteered to help at Driffield Show in July and then again later at the Country Fair.

£500 was received in total, £350 to Nafferton Millennium Committee (NMC) and £150 to Nafferton in Bloom, all of which reflected the great help that those volunteers had given with a view to ensuring both events were successful. Similar support may well be sought in 2016. So on behalf of the Rotary Club, thank you to all of you Nafferton residents who were involved (you know who you are).

### **Annual Race Night (NMC)**



### **Under 5’s Christmas Raffle**

Nafferton Pre-School are holding a bumper Christmas raffle! The draw will be at Nafferton Under Fives at 2:45pm on 11<sup>th</sup> December 2015. This years’ raffle has the largest collection of prizes to date including a £50 meal voucher for Supattra Thai restaurant in Bridlington, meal voucher at Driffield’s Trish Tandoori, London Bar meal

voucher, Olive Tree beauty voucher, Piglet Farm family pass, Dalby Forest day pass, Wetherspoons meal voucher, Spa

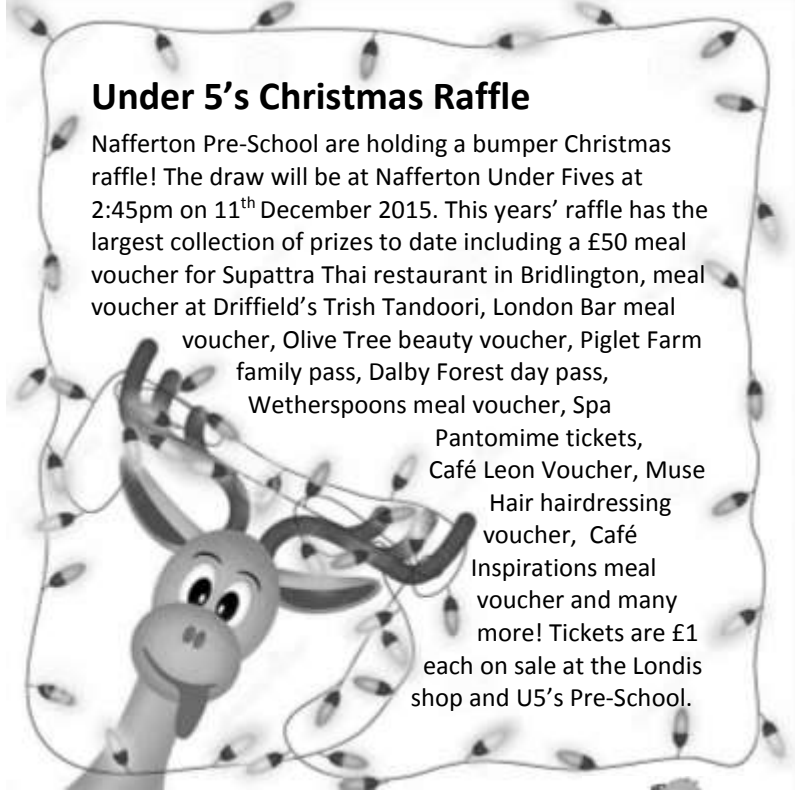
Pantomime tickets, Café Leon Voucher, Muse

Hair hairdressing voucher, Café

Inspirations meal voucher and many

more! Tickets are £1

each on sale at the Londis shop and US’s Pre-School.



**Christmas Eve- Carol Singing will be taking place on Jubilee Gardens 7-8pm Don’t forget to bring your lantern!**



### **Nafferton Primary School**

Pupils at Nafferton Primary school held a non-uniform day for Children in Need, with many electing to dress in fun and heroic outfits for the day! Their donations raised a wonderful £327.59 and a further £138.10 was collected for the Poppy Appeal!

On Friday 20<sup>th</sup> November, the school was visited by Image Musical Theatre who performed ‘The Sword in the Stone’ with the help of the children. The children were excited to have such entertaining guests and were thoroughly amused by the show!



Date for your diaries! The Nafferton Village Hall is booked for the annual NMC Race Night on **Saturday 27<sup>th</sup> February 2016.** This fun evening is always a winner - in more ways than one!! Further details in the February Newsletter!

# Church Services

## Nafferton Methodist Church Advent & Christmas Services

**Thursday 3<sup>rd</sup> December** at 7pm in Nafferton Methodist Church, an Advent service led by Mr Alan Moir.

**Sunday 20<sup>th</sup> December** at 4pm- A family Nativity and Carol service led by Rev Alison McDonald followed by coffee, mince pies and buns.

**Christmas Eve** - Carol Singing on Jubilee Gardens 7-8pm. Bucket collection to be taken for Driffield Foodbank

**Christmas Day** - 9:30am Family Christmas Day service led by Rev Alison McDonald.

---

### SERVICES AT ALL SAINTS' CHURCH

**MINISTRY TEAM (FOR THE BENEFICE OF HUTTON CRANSWICK WITH SKERNE, WATTON & BESWICK AND THE BENEFICE OF NAFFERTON WITH WANSFORD)**

Revd Brian Lees	Priest in Charge	01377 270806
Revd Hilary Boon	Associate Priest	01377 202084
Mrs Gwyneth Southall	Reader	01377 253572
Mrs Caroline Lees	Reader	01377 270806
Miss Trish Barker	Reader	01377 270091
Mr Martin Adams	Reader	01377 270120
Mrs Sue Nichol	Recognised Parish Assistant	

*To arrange: a wedding, please contact Revd Brian Lees, or for baptisms, contact Revd Hilary Boon*

**CHURCHWARDEN** Mr Michael Anderson 01377 254410

#### SERVICES

<b>6th December</b>	10.45am	Family Service
<b>13th December</b>	10.45am	Holy Communion
<b>20th December</b>	10.45am	Carol Service
<b>24th December</b>	4.00pm	Crib Service
	11.00pm	Midnight Holy Communion
<b>27th December</b>	10.45am	Holy Communion
<b>3rd January</b>	10.45am	Family Service with Baptism
<b>10th January</b>	10.45am	Holy Communion
<b>17th January</b>	10.45am	Family Service with Baptism
<b>24th January</b>	10.45am	Holy Communion
<b>31st January</b>	10.45am	Family Service (Joint service with Methodists)

*Wishing you all a joyful, peaceful Christmas.*

**From the Parish Registers: Holy Baptisms.** Sky Joy-Dee Price, Lexi Louise-Joy Price, Libby Amber Price, Keira Leigh Price, Melody Lillian Price on 20th September. Harriet Sims on 1<sup>st</sup> November

**Funeral.** John William Taylor on 16th October aged 85

**On behalf of the Newsletter team, may we wish you all a very Merry Christmas and a Happy New Year!**

This edition has been edited by Nicola Clarkson-Hall, as always, many thanks to all contributors.

To submit copy for the February edition, please email your content to newsletter@nafferton.net by January 15<sup>th</sup> 2016, or call Sheenagh on 252039, thank you!

