

# NAFFERTON NEWSLETTER



## NAFFERTON SCARECROW FESTIVAL

Scarecrow season is upon us again! Straw creations themed as 'Heroes and Villains' will be on show during

**Nafferton's second Scarecrow Festival, taking place Saturday 20<sup>th</sup> – Sunday 21<sup>st</sup> June!**

**If you've not yet entered - don't miss out! LATE ENTRIES ARE BEING ACCEPTED UNTIL 3pm Wed 3<sup>rd</sup> JUNE.** To enter, simply complete the entry form from Nafferton.net, Londis Shop or the Post Office, and post in the blue post box at the side of the Village Hall. Thanks to the 50+ of you who've entered so far, we're looking forward to seeing your finished masterpieces!!

Maps for the scarecrow trail will be available for £1 from the Village Hall between 10am-4pm during the festival weekend. The trail map gives the location of all the scarecrows, in addition to a voting slip (please be sure to vote for your favourite)! It will also include details of activities happening over the weekend – including the all-important prize-giving ceremony!

Organisers are hoping this festival will be as successful as the original last year, which saw the village come to life and the community come together to have fun whilst raising funds for many Nafferton groups in the process.

Of course great events don't 'just happen' - last year we had a team of volunteer helpers – and this year, help would be appreciated once again! Tombola and raffle prize donations are being gratefully received, and home bakers are being called upon for donations of buns and other baked treats to sell (please be sure to label your contribution with relevant allergen advice), and if you're able to give an hour or two – or more - at any time over the weekend, we'd love to have you help man a stall or serve some tea; please do get involved. To volunteer or pledge donations, please email [scarecrow@nafferton.net](mailto:scarecrow@nafferton.net), call Sophie on 538313 or visit our Facebook page where you can message the organisers and find details of all the latest plans. Thank you!

## 'CROW DOWN' Sat Eve 20<sup>th</sup> June

New to this year's festival – the Rec Club will be hosting a 'Crow Down' on Saturday 20<sup>th</sup> June from 4pm-9pm. The evening promises to be lots of fun with music, food, bouncy castle and kiddie's rides. There will also be a children's fancy dress competition in the Festival theme of 'Heroes and Villains'. What better way to end a day of scarecrow spotting?! Everyone welcome!



**Parish Council:** The Parish Council meets on the second Wednesday of every month at 7.30pm. Please note: Meetings are now held at the Rec. Club, (Eastlands, Nafferton, YO25 4JH) instead of the Primary School. Each regular meeting is preceded with an OPEN FORUM for parishioners to raise any issue they wish to draw to the attention of our Parish Council.

**New Parish Councillors Needed:** Following the May elections, we have only 8 out of a possible 13 Parish Council seats filled. Anyone interested can contact Parish Clerk, Mrs. M. Tyler, Breezy Cottage, Kelk, YO25 8HN Tel: 01262 488702.

### East Riding of Yorkshire Council - Result of Uncontested Election of Parish Councillors:

Margaret Buckton	South Cattlehomes, Wansford	Melanie Cross	4 Priestgate
Ross Holmes	Orchard Cottage, Carr Lane	Miranda Hubbard	4 Eastlands
Robert Peyton	5 Beech Grove	Tracy Swann	24 Nunnings Way
Susan Tait	3 Westgate	Jonathan Wortley	1 West Drive



**School Holiday Fun Days** - The Rec will be running Family Fun Days through the school holidays in conjunction with East Riding Sports, Play and Arts Service. These will be on Mon 20<sup>th</sup> July 11am - 3pm, Thurs August 6<sup>th</sup> 10 – 12 and Mon 24<sup>th</sup> Aug 1-3pm. Various sports, games and arts/crafts activities will be available free of charge.

**Rec Club** - The Bowls, Tennis and Cricket seasons are upon us again. Come and support your local teams at the Recreation Club - who knows, you may be inspired to join in! Fixture lists can be found on the Nafferton.net website and on the Mere notice board. We are also hoping to have 2 football teams playing from the Rec during the upcoming season. More players always welcomed for all our teams and it would be great to have different sports played other than traditional ones - so we would love to hear from you. See back page for more news from the Rec!



## NAFFERTON BELLS

Nafferton Bellringers have continued to ring for special occasions over the last few weeks, these include a very special ring for the new royal baby girl on the day of her birth. We also rang for the VE Day 70th anniversary

celebrations, an event that took place all over the country involving numerous other towers at 11am

precisely. The event was also featured on radio Humberside.

Nafferton Tower welcomed the Yorkshire Association of Change Ringers in May. Everyone had a fantastic afternoon of ringing and the bells were rang superbly.

A very important visit is due later in the month by the Central Council of Church Bellringers and this will be reported in the next issue.

If you would like to learn to ring the bells - or just visit - please contact Paul Pickering (tower captain) 07917391052



Year 3 at Nafferton Primary School have been busy this term learning about 'Where We Live'. They also learnt about letter writing recently, and pupils put their new skills to good use and presented Nafferton Newsletter with a couple of letters for residents, We were very impressed with them – and the superb handwriting skills, well done all of you! Due to space restriction we have typed some of the letter content – but included a small sample from the letters to show everyone just how great they are!

Dear People of Nafferton,

We are writing to you because our topic in Year 3 this term is called 'Where We Live' and involves us studying what Nafferton looked like in the past and how it has changed over time. It would be amazing if you could spare any pictures you have of Nafferton village when you were young or first arrived at the village.

We would like any pictures of the village, the Mere, the School, the Main Street and shops, or any other houses and buildings which may have changed.

If you have any pictures which you think we might find interesting please bring them in as soon as possible. Please put them in an envelope with your name and address on the front and hand them in to an adult in Year three, or in the office, at the main entrance, so that we can return them to you when we have finished the topic. We promise that we will take great care of your photos but if you have any special photos which you don't want to risk losing or being damaged then it would be nice if you could bring in a photocopy.

Thanks for your help,

Yours faithfully,  
Eve

Dear people of Nafferton

I am writing to ask you if you could please support us on our sponsored walk. Every year in Sports week in July, the whole school goes on a big walk around Nafferton. We do this to get fit and to raise money to buy equipment for the school.

When we are walking around Nafferton, it is quite quiet and we could do to have some Company, so, if you would like to, we would be honoured if you could come out of your houses and cheer us on!

We will be carrying buckets just in case you would like to make a small donation to the school.

Our walk will be on Friday 10<sup>th</sup> July. We will start at the school at 9am, walk towards the Mere, up the Main Street through the cut into Hall Close, back down Driffield Road, down Howe Lane, through Ward Lea, into St Quinten Field, towards the Nunnings before cutting through Westgate Meadows on the way back to school. Phew! I hope we will see you on our walk!

Yours Faithfully,  
Eva



## Nafferton 76<sup>th</sup> Open Show ~ Village Hall, Saturday 11<sup>th</sup> July

**Look out for the Show Schedule, coming through your letterbox in the next few days!**

*Classes in Vegetables, Flowers, Flower Arranging, Wine, Cookery, Photography, Handicraft and Crafts and Children's classes.*

**Entries due on Thursday 9<sup>th</sup> July in the committee room of the Village Hall or to 31 Lowthorpe Lane**

**Doors open at 2:30pm. Show to be opened at 3pm by Mr Alan Moir. Details from Sarah 01377 272658**

## Still Crunch Time For NMC

*On the agenda for NMC's 2015 AGM on Thursday 14 May was the subject of the future of this village charity. With three of its founder trustees ready to step down, new trustees were urgently needed if the charity's work was to continue.*

*The AGM produced a full and frank discussion about NMC's future operation with villagers anxious for its work to continue, especially the minibus service but also the fundraising for village groups and organising of major events such as the Jubilee celebrations. They acknowledged, however, the shortage of people in the village willing to take on responsible roles.*

*One new trustee was elected but the meeting ended without a treasurer in post. The chair and secretary were elected for a further year. There are seven trustees in place and work is being done to secure a treasurer for co-option as soon as possible. This would enable NMC to continue for the short term but may not be a long term solution. A new chair and secretary are also needed.*

*The trustees recognise they have a duty to consider alternative directions and identify a way forward. This will be done over the coming months. The final option would be to call a general meeting to recommend the dissolution of the charity. They hope it will not come to that, but without new volunteers willing to really get involved, it will have to happen.*

*If anyone is interested in becoming involved please contact Sheila Cook on 254281.*

## Stress Management Sessions

Starts on Thursday 4th June 10-11am in Nafferton Methodist Schoolroom.

Come and join our Stress Management sessions and see how much better you can feel in just 6 weeks.

Learn to relax and be ready to enjoy a fun summer this year. Small friendly group. £4.50 per session.



## NAFFERTON IN BLOOM

As we move into summer, we are starting to see some lovely colours around the village in the various floral displays, from flower beds on New Road, North Street, hanging baskets at the bus shelter, planters on Jubilee Gardens, planters and bed at the school on Westgate, planters on the railway station, flower beds at the railway station and numerous other sites. All designed to make the village colourful.

NIB members have been out and about being extremely busy!

The elements were against us for the Good Friday Plant Sale, but that didn't deter the members turning out, which together with attendance from the village community, helped make the event a success. Hot drinks provided by the Scouts were much appreciated by everyone.

### Floral Competitions – Judging Dates:

Judging for the **NAFFERTON FEOFFEE'S TROPHY** will take place on **10<sup>th</sup>/11<sup>th</sup> July**.

Judging for the **LONDIS TROPHY** will take place week commencing **6<sup>th</sup> July**.

Details of entry to the **Primepak Foods Competition** are prominently displayed around the village.

**Prize giving will be held on Jubilee Gardens on Saturday 18<sup>th</sup> July at 2.00pm.**

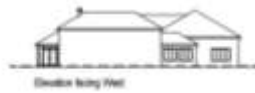
We would like take the opportunity to thank people for the support that NIB is given. Particular thanks goes to Nafferton Millennium Committee and The Nafferton Feoffees' Charities Trust for their continued financial support, which is very much appreciated.

***We continue to look for more volunteers to join our merry band of "BLOOMERS". Anyone wishing to join please contact Jan on 250175 or Bill on 538629. It won't cost you a penny, just as much or as little of your time that you can spare.***

## Weekly Activities/Services at Nafferton Methodist Church & Schoolrooms

Mon	10-12 noon	Mustard Seed Coffee Shop	Coffees, teas, teacakes and toast. Bric-a-brac and home baking
Tues	9:30-11am	Little Bears	Parent/Carer Toddler Group, refreshments available
Wed	10:30-11:30am	Nafferton Activities Group	Fun activities including kurling, bowls, gentle exercise
Thurs	1:30-3pm	The Branch	Crafts, Scrabble & free access to Wifi, laptops & computer tuition
Fri	9:30-11am	Little Bears	Parent/Carer Toddler Group, refreshments available
	6-7pm	Shell Group 5-7 year olds	Jayne the Leader runs this Christian group in arts, crafts, Bible stories and games
	7-8pm	Shell Group for over 7's	
Sunday	10:30am	Morning Worship	A variety of local preachers and Ministers lead our weekly worship, refreshments following the service
	6:30pm	Fellowship Service	A more informal worship time, discussion, music and prayer.

Please telephone Sarah for details on any of the above. Tel: 272658.



## Proposed Nafferton Recreation Club Pavilion Re-Development

The Parish Council, in conjunction with Nafferton Feoffees' Charitable Trust, are proposing to re-develop the Recreation Club Pavilion in a project that would see facilities at the Rec dramatically improved, and a new, long-awaited home secured for Nafferton Under Fives. An open public meeting was held on 20<sup>th</sup> May to discuss the proposal and full planning permission is being sought. Copies of the proposal and plans are available to see on [Nafferton.net](http://Nafferton.net).

### Project Summary

Nafferton is an expanding village, with an increasingly younger population. The current recreation facilities in the village have been inadequate and inaccessible to many. There is a need to create an inclusive environment for recreation and sport, encouraging more families to participate. The present changing, shower and toilet facilities are totally inadequate. There is no "club meeting room" for refreshments, and no facilities for officials. These are the minimum recommendations stipulated by "Sport England". We also need a permanent home for Nafferton pre-school. The numbers of children attending the school is increasing, and importantly there is no outdoor play facility, which is an Ofsted requirement.

A new building with enhanced facilities would help to provide a focus for recreation in the village as well as an opportunity to get more local people involved in sport.

The proposed new Recreation Club Pavilion would provide accommodation and facilities for:

- Nafferton Under 5s pre-school nursery to include classrooms, kitchenette, toilets, staff room, and outdoor play area in a dedicated, secure setting fully compliant with Safeguarding of Children Policy.
- Sports changing facilities to include showers and toilets. Plus changing facilities for the officials/first aid room.

- Club room and shared kitchen for refreshments for the sports clubs (football, tennis, cricket). This room would also be used for IT classes and small meetings.
- Function room and shared kitchen to provide space for social functions, aerobics, dance and indoor bowls, etc. It could also be used for Youth Club meetings.
- A garage facility for all the grass cutting and maintenance equipment and space to do maintenance of the equipment on site. Storage space for outdoor equipment.
- New parking facilities and access to the site, so that a "one-way" traffic system can be adopted. This will include 36 car parking spaces within the Recreation Grounds and 13 new off-road parking spaces at Eastlands.

### Benefits of the Scheme

- Nafferton has the Village Hall and Methodist Rooms which provide accommodation for village events and activities, but there is a need for accommodation for educational and health related activities, meetings, community groups, and other social events. Parking is on-street at the Village Hall and limited at the Methodist Rooms.
- A new facility for Nafferton Under 5s would provide two classrooms and a secure outdoor space. Off-street parking and drop-off for parents would ease pressure on the main street whilst the proposed introduction of a new one way entry/exit system would further alleviate current traffic issues by creating additional off-street parking for residents. The current trend of parking on both sides of a narrow street is often a topic of debate and of specific concern to the Emergency Services.
- Families coming to the pre-school will also start to see the benefits of a multi-use facility for a number of activities and sports for the whole family.
- The changing facilities proposed would meet Sport England recommendations.
- The proposed development would not only replace the existing wooden pavilion but would enable the removal of two ISO storage containers currently on the site and a partially demolished tractor shed. In real terms, the proposal to replace all of these with one dedicated facility means that the tiny amount of additional land used within the development, is more than offset by the huge advantages for the village. The core essence of the Recreation Ground will be retained without encroachment on, or detracting from any of the current sports pitches.

### Services at All Saints' Church

7th June	10.00	Family Service
14th June	10.00	Holy Communion
21st June	10.00	Joint service of Morning Praise at Wansford
28th June	10.00	Holy Communion
5th July	10.00	Family Service
12th July	10.00	Holy Communion
19th July	10.00	Family Service with Baptism
26th July	10.00	Holy Communion

### All Saints' Church Contacts

Revd Brian Lees	Priest in Charge	01377 270806
Revd Hilary Boon	Associate Priest	01377 202084
Mr M Anderson	Church Warden	01377 254410

*Anyone wishing to arrange a wedding - please contact Revd Brian Lees, for a Baptism, please contact Revd Hilary Boon.*

**From the Parish Registers: Holy Baptism** Poppy Yeadon on 3<sup>rd</sup> May.

**Funerals** Harry Slater, aged 94 years, on 24<sup>th</sup> April. Joan Shawcross, aged 80 years, on 15<sup>th</sup> May

This edition has been edited by Nicola Clarkson-Hall. As always a big thank you to all contributors ~ The August issue will be edited by David Cooper, Telephone: 249240. Please submit content to [newsletter@nafferton.net](mailto:newsletter@nafferton.net) by 15<sup>th</sup> July 2015. Visit our village website, [www.nafferton.net](http://www.nafferton.net) to keep up to date with village news and events in the meantime!